

1ST FLOOR EQUIPMENT FLOOR PLAN  
SCALE: 1/2"=1'-0"

THIS DRAWING IS AN INSTRUMENT OF DESIGN SERVICE AND IS THE INTELLECTUAL PROPERTY OF AZ RESTAURANT CONSULTING. THIS PROPERTY MAY NOT BE REALLOCATED IN ANY FORM, BY ANY OTHER ENTITY, FOR ANY PURPOSE WITHOUT WRITTEN PERMISSION FROM AZ RESTAURANT CONSULTING, UNDER PENALTY OF LAW. THIS DRAWING IS THE CULMINATION OF CONTRACTED TIME BETWEEN OUR EXPERIENCED DESIGN CONSULTANT AND THE "OWNER"/"OWNER'S REPRESENTATIVE" WHICH REFLECTS THE JOINT OPINION OF BOTH PARTIES. THE LAYOUT(S) ABOVE ARE INTENDED TO PRESENT THE MOST EFFICIENT AND EFFECTIVE USE OF THE SPACE PROVIDED, ACCORDING TO INFORMATION UNDERSTOOD BY ALL PARTIES AT THE ORIGINAL DATE OR MOST RECENT REVISION DATE SHOWN ON THIS DRAWING. DEVIATION FROM THE DETAILS ABOVE ARE NOT THE RESPONSIBILITY OF AZ RESTAURANT CONSULTING.

| REV. | DATE    | DESCRIPTION             | STATUS |
|------|---------|-------------------------|--------|
| △    | 4/7/23  | BAR ADDITION            |        |
| △    | 4/11/23 | BOH KITCHEN ADJUSTMENTS |        |
| △    | 4/18/23 | NEW BACKGROUND          |        |
| △    | -       | -                       | -      |
| △    | -       | -                       | -      |

ARCHITECT  
**GRAY REESE, LLC ARCHITECTS**  
 244 13TH STREET NE #201  
 ATLANTA, GEORGIA 30309  
 (404) 234-6002

**AZ\*RC**  
**ARIZONA**  
 RESTAURANT CONSULTING  
 7920 E. OAK STREET - SCOTTSDALE, ARIZONA 85257  
 602.695.5131  
 JUSTIN@AZRESTAURANTCONSULTING.COM

LAND OF A THOUSAND HILLS  
 BIRMINGHAM, ALABAMA  
 FOODSERVICE EQUIPMENT PLAN

Drawn by: **JBM**  
 Checked by:  
 Date: **3/18/2023**  
 Sheet Number:

**FS-1.0**

EQUIPMENT SCHEDULE

| PROVIDED BY GC | PROVIDED BY KCC | PROVIDED BY VENDOR | Item Number | Quantity | Model           | Description               | Equipment Remarks                       | Hard Wire Direct<br>Cord & Plug<br>NEMA | Voltage | Phase   | Amps | HP   | Electrical<br>Rough In AFF | Electrical Remarks | Cold Waste Size | Cold Rough In AFF | Hot Waste Size | Hot Rough In AFF | Indirect Waste Size | Direct Waste Size | Direct Waste Size | Plumbing Remarks | Item Number |
|----------------|-----------------|--------------------|-------------|----------|-----------------|---------------------------|---|---|---------|---------|------|------|----------------------------|--------------------|-----------------|-------------------|----------------|------------------|---------------------|-------------------|-------------------|------------------|-------------|
| X              |                 |                    | 100         | 1        | Turbo Air       | TGM-23SD-N6               | Refrigerated Merchandiser               | X                                       | 5-15P   | 115     | 1    | 2.7  | 1/5                        | 24"                |                 |                   |                |                  |                     |                   |                   |                  | 100         |
| X              |                 |                    | 101         | 1        | Turbo Air       | TGM-48R(B)-N              | Refrigerated Merchandiser               | X                                       | 5-15P   | 115     | 1    | 5.7  | 1/2                        | 24"                |                 |                   |                |                  |                     |                   |                   |                  | 101         |
| X              |                 |                    | 200         | 1        | Turbo Air       | TCGB-36UF-W(B)-N          | Display Case, Refrigerated              | X                                       | 5-15P   | 115     | 1    | 7.5  | 1/3                        | 24"                |                 |                   |                |                  |                     |                   |                   |                  | 200         |
| X              |                 |                    | 201         | 1        | Turbo Air       | TCGB-36UF-DR-W(B)         | Display Case, Non-Refrigerated Bakery   | X                                       | 5-15P   | 115     | 1    | 1    |                            | 24"                |                 |                   |                |                  |                     |                   |                   |                  | 201         |
| X              | X               |                    | 202         | 1        | By Vendor       | POSSCREEN                 | Point of Sale, Screen Only              | X                                       | 5-15P   | 115     | 1    | 6    |                            | 24"                |                 |                   |                |                  |                     |                   |                   |                  | 202         |
| X              |                 |                    | 203         | 1        | Turbo Air       | TUR-48SD-N(-AL)(-AR)      | Undercounter Refrigerator               | X                                       | 5-15P   | 115     | 1    | 2.5  | 1/5                        | 24"                |                 |                   |                |                  |                     |                   |                   |                  | 203         |
| X              | X               |                    | 204         | 2        | F&O             | MAJOR V-E                 | Coffee Grinder                          | X                                       | 5-15P   | 115     | 1    | 6    |                            | 24"                |                 |                   |                |                  |                     |                   |                   |                  | 204         |
| X              |                 |                    | 205         | 1        | Micro Matic     | DP-220D-GR                | Glass Rinser & Drain Pan                | w/ Pressure Regulator & Valve           |         |         |      |      |                            |                    |                 | 1/2"              | 24"            |                  |                     | 1"                |                   |                  | 205         |
| X              |                 |                    | 206         | 1        | rw              | 25120                     | Knock Box                               |   |         |         |      |      |                            |                    |                 |                   |                |                  |                     |                   |                   |                  | 206         |
| X              | X               |                    | 207         | 2        | F&O             | MODBAR AV 2 TAPS 1 MODULE | Espresso Cappuccino Machine, In-Counter | X                                       | 6-20P   | 208-24C | 1    | 14.2 |                            | 24"                |                 | 1/2"              | 24"            |                  |                     |                   |                   |                  | 207         |
| X              | X               |                    | 208         | 1        | F&O             | MODBAR STEAM SYSTEM       | Milk Steamer Frother                    | X                                       | 6-20R   | 208-24C | 1    | 14.4 |                            | 24"                |                 | 1/2"              | 24"            |                  |                     |                   |                   |                  | 208         |
| X              | X               |                    | 209         | 1        | F&O             | MODBAR POUR-OVER SYSTEM   | Coffee Brewer, Pourover                 | X                                       | 6-20P   | 208-24C | 1    | 12   |                            | 24"                |                 | 1/2"              | 24"            |                  |                     |                   |                   |                  | 209         |
| X              | X               |                    | 210         | 1        | By Owner        | SNZGRD                    | Sneeze Guard, Radius                    |   |         |         |      |      |                            |                    |                 |                   |                |                  |                     |                   |                   |                  | 210         |
| X              | X               |                    | 211         | 1        | F&O             | EK43                      | Coffee Grinder                          | X                                       | 5-15P   | 120     | 1    | 7    |                            | 24"                |                 |                   |                |                  |                     |                   |                   |                  | 211         |
| X              |                 |                    | 212         | 1        | BK Resources    | BK-MIB-2411               | Mobile Ice Bin, Undercounter            |   |         |         |      |      |                            |                    |                 |                   |                |                  |                     |                   |                   |                  | 212         |
| X              |                 |                    | 213         | 1        | Advance Tabco   | KMS-302                   | Work Table, 30"x24"                     |   |         |         |      |      |                            |                    |                 |                   |                |                  |                     |                   |                   |                  | 213         |
| X              |                 |                    | 214         | 1        | Curtis          | G4TP1T10A3100             | Coffee Brewer                           | X                                       |         | 220     | 1    | 34.5 |                            | 44"                |                 | 1/2"              | 44"            |                  |                     |                   |                   |                  | 214         |
| X              |                 |                    | 215         | 1        | Turbo Air       | TWR-28SD-N                | Work Top Refrigerator, 28"              | X                                       | 5-15P   | 115     | 1    | 2.2  | 1/5                        | 24"                |                 |                   |                |                  |                     |                   |                   |                  | 215         |
| X              |                 |                    | 216         | 1        | Turbo Air       | TWF-28SD-N                | WorkTop Freezer, 28"                    | X                                       | 5-15P   | 115     | 1    | 1.9  | 1/3                        | 24"                |                 |                   |                |                  |                     |                   |                   |                  | 216         |
| X              |                 |                    | 217         | 1        | TurboChef       | ECO                       | Rapid Cook Oven                         | X                                       | L6-20P  | 208-24C | 1    | 20   |                            | 44"                |                 |                   |                |                  |                     |                   |                   |                  | 217         |
| X              |                 |                    | 218         | 1        | Turbo Air       | TST-36SD-N6               | Sandwich Prep Refrigerator, 36"         | X                                       | 5-15P   | 115     | 1    | 2.9  | 1/5                        | 24"                |                 |                   |                |                  |                     |                   |                   |                  | 218         |
| X              |                 |                    | 219         | 1        | Krowne          | KR24-12ST                 | Hand Sink                               |   |         |         |      |      |                            |                    | 1/2"            | 15"               | 1/2"           | 15"              |                     | 1 1/2"            | 12"               |                  | 219         |
| X              | X               |                    | 220         | 1        | By Owner        | SNZGRD                    | Sneeze Guard, Straight                  |   |         |         |      |      |                            |                    |                 |                   |                |                  |                     |                   |                   |                  | 220         |
| X              |                 |                    | 221         | 1        | Globe           | GPG14D                    | Panini Grill, 14"x14"                   | X                                       | 5-15P   | 120     | 1    | 15   |                            | 44"                |                 |                   |                |                  |                     |                   |                   |                  | 221         |
| X              |                 |                    | 300         | 1        | Jackson WWS     | DISHSTAR HT-E             | Dishwasher, Undercounter                | X                                       |         | 208     | 1    | 24.7 | 1                          | 24"                |                 | 1/2"              | 12"            | 1 1/2"           |                     |                   |                   |                  | 300         |
| X              |                 |                    | 301         | 3        | T&S Brass       | B-3950                    | Twist Waste Valve                       |   |         |         |      |      |                            |                    |                 | 1 1/2"            |                |                  |                     |                   |                   |                  | 301         |
| X              |                 |                    | 302         | 1        | T&S Brass       | B-0230-CR-LN              | Wall Mount Faucet                       |   |         |         |      |      |                            |                    | 1/2"            | 18"               | 1/2"           | 18"              |                     |                   |                   |                  | 302         |
| X              |                 |                    | 303         | 1        | Advance Tabco   | FE-3-1014-15RL-X          | 3 Comp Sink                             |   |         |         |      |      |                            |                    |                 |                   |                |                  |                     |                   |                   |                  | 303         |
| X              |                 |                    | 304         | 1        | Advance Tabco   | WS-15-72-X                | Wall Shelf, 15"x72"                     | Mount @ 72" AFF to Shelf                |         |         |      |      |                            |                    |                 |                   |                |                  |                     |                   |                   |                  | 304         |
| X              |                 |                    | 305         | 1        | 3M Purification | DP390                     | Water Filtration System                 |   |         |         |      |      |                            |                    | 1/2"            | 84"               |                |                  |                     |                   |                   |                  | 305         |
| X              |                 |                    | 306         | 1        | Advance Tabco   | 7-PS-23-EC-SP-X           | Hand Sink                               |   |         |         |      |      |                            |                    | 1/2"            | 21"               | 1/2"           | 21"              |                     | 1 1/2"            | 18"               |                  | 306         |
| X              |                 |                    | 307         | 1        | Quantum         | GY                        | Wire Shelving Unit                      | See Written Specs                       |         |         |      |      |                            |                    |                 |                   |                |                  |                     |                   |                   |                  | 307         |
| X              |                 |                    | 308         | 1        | Hoshizaki       | H9320-51                  | Water Filter System, Single             |   |         |         |      |      |                            |                    | 1/2"            | 72"               |                |                  |                     |                   |                   |                  | 308         |
| X              |                 |                    | 309         | 1        | Hoshizaki       | B-500SF                   | Ice Bin, 500lb                          |   |         |         |      |      |                            |                    |                 |                   |                |                  | 1"                  |                   |                   |                  | 309         |
| X              |                 |                    | 310         | 1        | Hoshizaki       | KM-660MAJ                 | Ice Maker, Cube-Style                   | X                                       |         | 115     | 1    | 15.2 |                            | 72"                |                 | 1/2"              | FILT           |                  | 1"                  |                   |                   |                  | 310         |
| X              |                 |                    | 311         | 1        | Turbo Air       | M3R47-2-N                 | Reach-In Refrigerator                   | X                                       | 5-15P   | 115     | 1    | 2.8  | 1/3                        | 48"                |                 |                   |                |                  |                     |                   |                   |                  | 311         |
| X              |                 |                    | 312         | 1        | Turbo Air       | M3F47-2-N                 | Reach-In Freezer                        | X                                       | 5-15P   | 115     | 1    | 6.3  | 2/3                        | 48"                |                 |                   |                |                  |                     |                   |                   |                  | 312         |
| X              |                 |                    | 313         | 1        | Quantum         | GY                        | Janitorial Shelving                     | See Written Specs                       |         |         |      |      |                            |                    |                 |                   |                |                  |                     |                   |                   |                  | 313         |
| X              |                 |                    | 314         | 1        | Advance Tabco   | K-245                     | Wall Shelf w/ Mop Rack                  |   |         |         |      |      |                            |                    |                 |                   |                |                  |                     |                   |                   |                  | 314         |
| X              |                 |                    | 315         | 1        | T&S Brass       | B-0665-BSTP               | Service Sink Faucet                     |   |         |         |      |      |                            |                    | 1/2"            | 33"               | 1/2"           | 33"              |                     |                   |                   |                  | 315         |
| X              |                 |                    | 316         | 1        | By GC           | Z1996-24                  | Map Sinks, 24"x24" Fiberglass           |   |         |         |      |      |                            |                    |                 |                   |                |                  |                     |                   |                   |                  | 316         |
| X              |                 |                    | 317         | 1        | Unox            | XAVC-06FS-EPRM            | Combi Oven                              | X                                       |         | 208     | 3    | 42   |                            | 60"                |                 | 3/4" HB           | 60"            |                  | 1 1/2"              | 3"                | 0"                |                  | 317         |
| X              |                 |                    | 318         | 1        | Advance Tabco   | KMS-302                   | Work Table, 30"x24"                     |   |         |         |      |      |                            |                    |                 |                   |                |                  |                     |                   |                   |                  | 318         |
| X              |                 |                    | 400         | 1        | Turbo Air       | TCB-45BD-N                | Draft Beer Cooler                       | X                                       | 5-15P   | 115     | 1    | 2.6  | 1/3                        | 24"                |                 |                   |                |                  |                     |                   |                   |                  | 400         |
| X              | X               |                    | 401         | 1        | By Vendor       | POSSCREEN                 | Point of Sale, Screen Only              | X                                       | 5-15P   | 115     | 1    | 7    |                            | 38"                |                 |                   |                |                  |                     |                   |                   |                  | 401         |
| X              |                 |                    | 402         | 1        | Turbo Air       | TBB-35GD-N                | Back Bar Cabinet, Refrigerated          | X                                       | 5-15P   | 115     | 1    | 2.8  | 1/3                        | 24"                |                 |                   |                |                  |                     |                   |                   |                  | 402         |
| X              |                 |                    | 403         | 1        | Krowne          | KR24-12ST                 | Hand Sink                               |   |         |         |      |      |                            |                    | 1/2"            | 15"               | 1/2"           | 15"              |                     | 1 1/2"            | 12"               |                  | 403         |
| X              |                 |                    | 404         | 1        | Krowne          | KR24-18RD                 | Bottle Storage Unit                     |   |         |         |      |      |                            |                    |                 |                   |                |                  |                     |                   |                   |                  | 404         |
| X              |                 |                    | 405         | 1        | Krowne          | KR19-36DP-10              | Ice Bin                                 |   |         |         |      |      |                            |                    |                 |                   |                |                  | 1"                  |                   |                   |                  | 405         |
| X              |                 |                    | 406         | 1        | Quantum         | 183655                    | Solid Shelving                          |   |         |         |      |      |                            |                    |                 |                   |                |                  |                     |                   |                   |                  | 406         |
| X              |                 |                    | 407         | 1        | Krowne          | KR24-1C                   | Dump Sink                               |   |         |         |      |      |                            |                    | 1/2"            | 15"               | 1/2"           | 15"              | 1 1/2"              |                   |                   |                  | 407         |
| X              |                 |                    | 408         | 1        | Jackson WWS     | DELTA HT-E-SEER           | Glasswasher, Undercounter / Underbar    | X                                       |         | 208     | 1    | 24.7 | 1                          | 30"                |                 | 1/2"              | 15"            | 3/4"             | 12"                 |                   |                   |                  | 408         |
| X              |                 |                    | 409         | 1        | Krowne          | KR24-12ST                 | Hand Sink                               |   |         |         |      |      |                            |                    | 1/2"            | 15"               | 1/2"           | 15"              |                     | 1 1/2"            | 12"               |                  | 409         |
| X              |                 |                    | 410         | 1        | Krowne          | KR24-18RD                 | Bottle Storage Unit                     |   |         |         |      |      |                            |                    |                 |                   |                |                  |                     |                   |                   |                  | 410         |
| X              |                 |                    | 411         | 1        | Krowne          | KR19-36DP-10              | Ice Bin                                 |   |         |         |      |      |                            |                    |                 |                   |                |                  | 1"                  |                   |                   |                  | 411         |
| X              |                 |                    | MW1         | 1        | By GC           | MILLWORK                  | Millwork Cabinetry                      |   |         |         |      |      |                            |                    |                 |                   |                |                  |                     |                   |                   |                  | MW1         |

| REV. | DATE    | DESCRIPTION             |
|------|---------|-------------------------|
| △    | 4/7/23  | BAR ADDITION            |
| △    | 4/11/23 | BOH KITCHEN ADJUSTMENTS |
| △    | 4/18/23 | NEW BACKGROUND          |
| △    |         |                         |
| △    |         |                         |

ARCHITECT  
**GRAY REESE, LLC ARCHITECTS**  
 244 13TH STREET NE #201  
 ATLANTA, GEORGIA 30309  
 (404) 234-6002



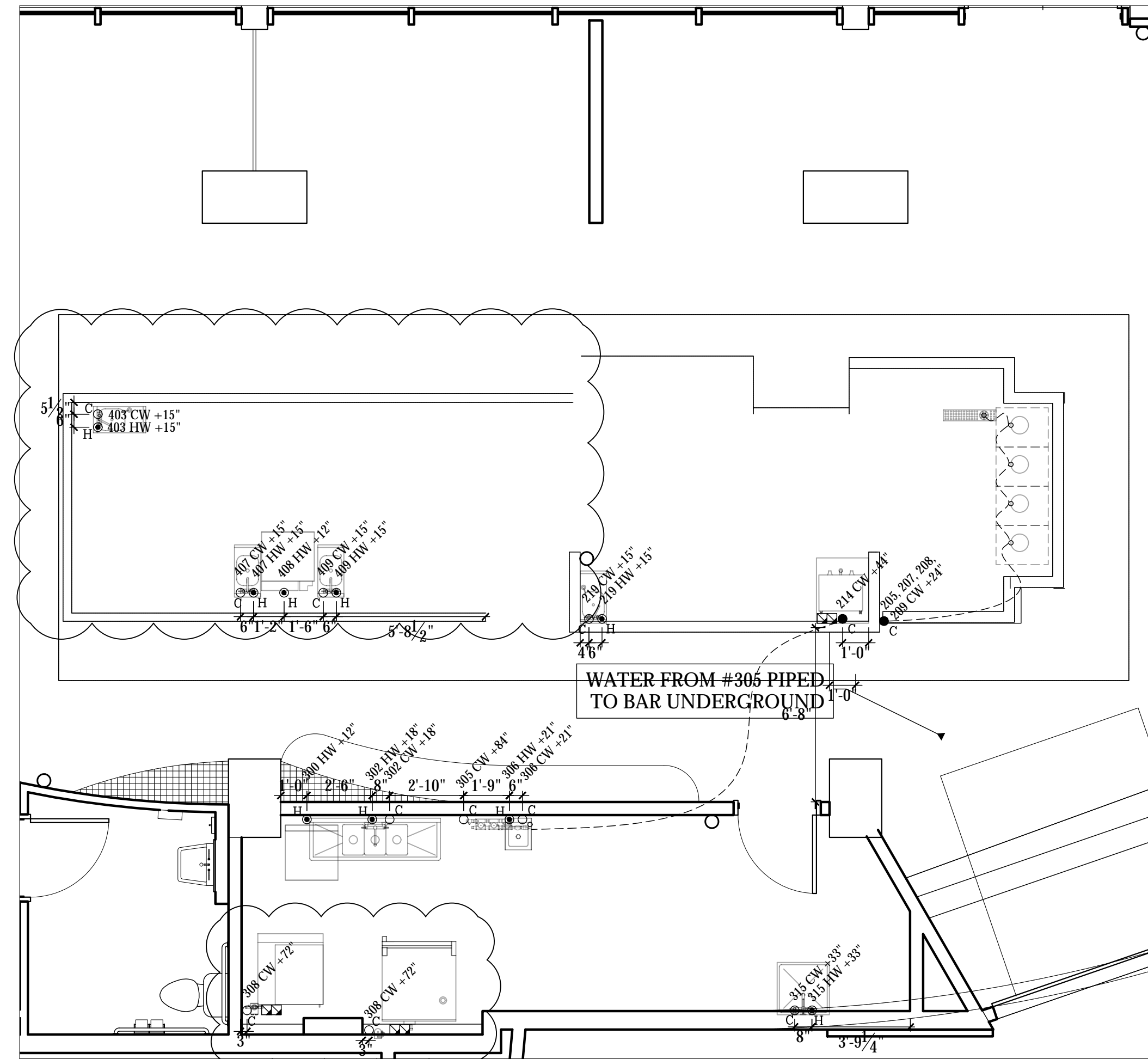
LAND OF A THOUSAND HILLS  
 BIRMINGHAM, ALABAMA  
 EQUIPMENT SCHEDULE

Drawn by: JBM  
 Checked by:  
 Date: 3/18/2023  
 Sheet Number:

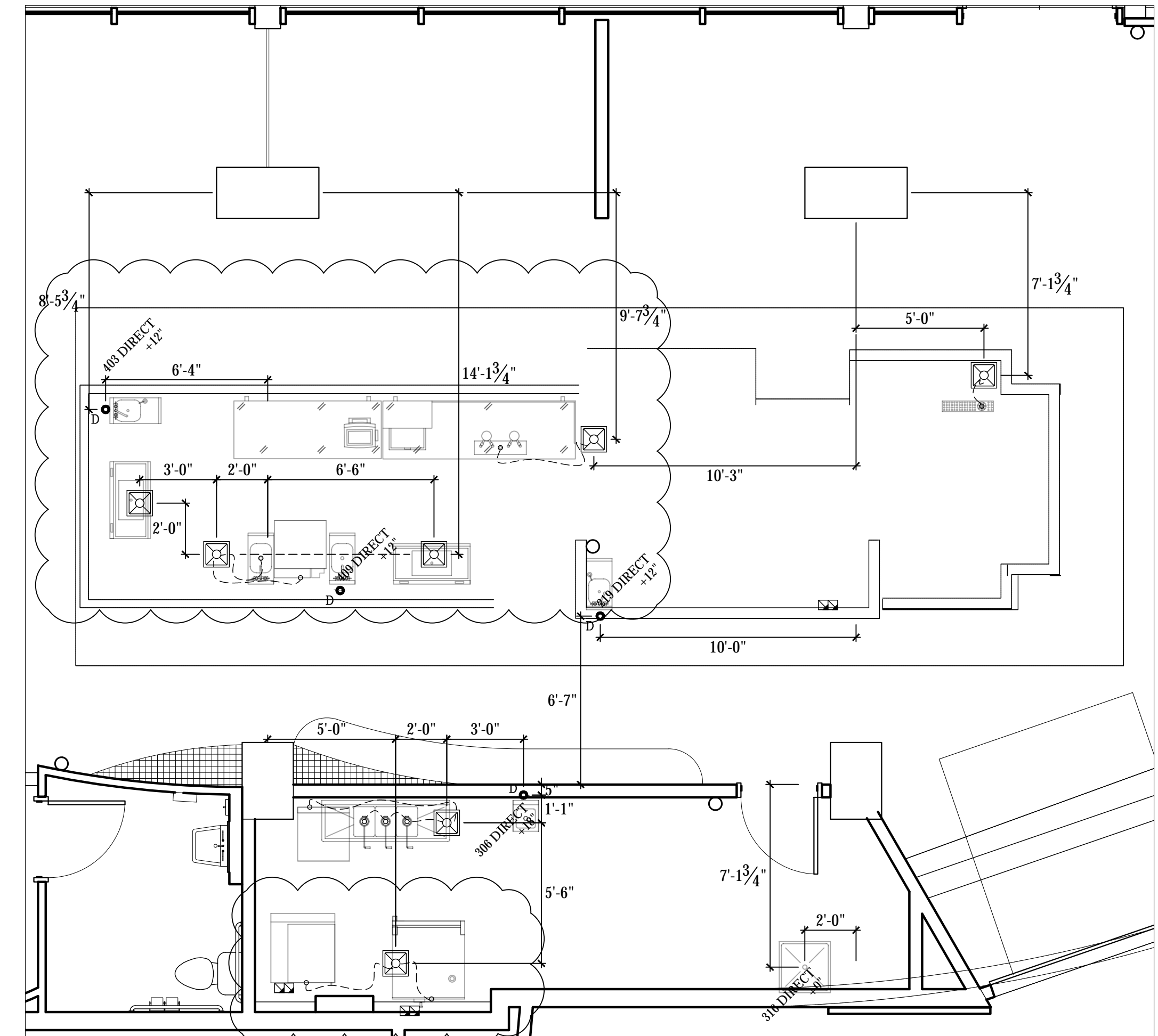
FS-1.1

FOR REFERENCE ONLY

THIS DRAWING IS AN INSTRUMENT OF DESIGN SERVICE AND IS THE INTELLECTUAL PROPERTY OF AZ RESTAURANT CONSULTING. THIS PROPERTY MAY NOT BE REALLOCATED IN ANY FORM, BY ANY OTHER ENTITY, FOR ANY PURPOSE WITHOUT WRITTEN PERMISSION FROM AZ RESTAURANT CONSULTING, UNDER PENALTY OF LAW. THIS DRAWING IS THE CULMINATION OF CONTRACTED TIME BETWEEN OUR EXPERIENCED DESIGN CONSULTANT AND THE "OWNER"/"OWNER'S REPRESENTATIVE" WHICH REFLECTS THE JOINT OPINION OF BOTH PARTIES. THE LAYOUT(S) ABOVE ARE INTENDED TO PRESENT THE MOST EFFICIENT AND EFFECTIVE USE OF THE SPACE PROVIDED, ACCORDING TO INFORMATION UNDERSTOOD BY ALL PARTIES AT THE ORIGINAL DATE OR MOST RECENT REVISION DATE SHOWN ON THIS DRAWING. DEVIATION FROM THE DETAILS ABOVE ARE NOT THE RESPONSIBILITY OF AZ RESTAURANT CONSULTING.



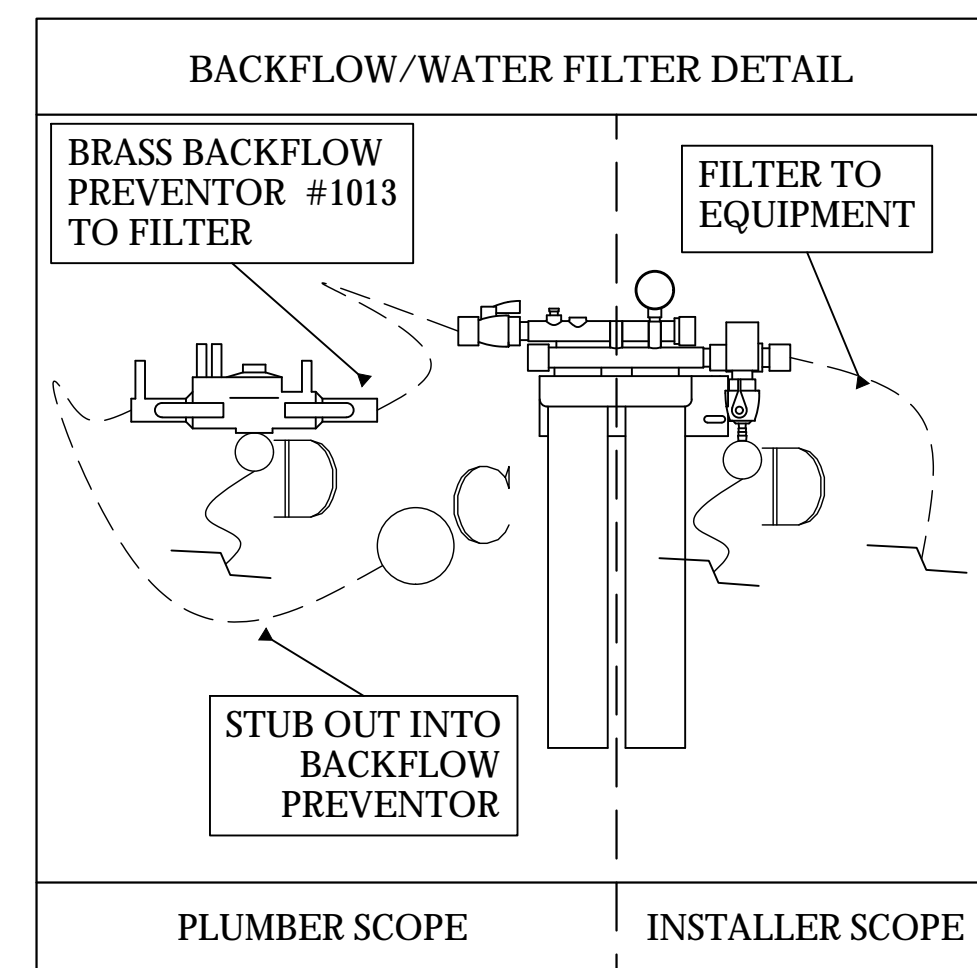
WATER ROUGH IN PLAN  
SCALE: 1/4"=1'-0"



DRAIN ROUGH IN PLAN  
SCALE: 1/4"=1'-0"

**LEGEND - PLUMBING CONNECTIONS**

- NOT ALL SYMBOLS MAY BE USED
- UNTREATED COLD WATER STUB OUT
  - TREATED COLD WATER STUB OUT
  - UNTREATED HOT WATER STUB OUT
  - HOT/COLD WATER CONNECTION POINT TO BE INSTALLED BY PLUMBING CONTRACTOR
  - G-GAS STUB OUT AT WALL
  - GAS CONNECTION POINT TO BE INSTALLED BY PLUMBING CONTRACTOR
  - DIRECT DRAIN STUB OUT
  - DRAIN CONNECTION POINT PVC OR COPPER (AS REQUIRED) TO FLOOR SINK TO BE INSTALLED BY PLUMBING CONTRACTOR
  - FLOOR SINK, NEW
  - FLOOR SINK, EXISTING
  - FLOOR DRAIN
  - BACKFLOW PREVENTER LOCATION
  - SODA CONDUIT STUB OUT (UNDERGROUND)
  - SODA LINES (OVERHEAD)
  - BEER CONDUIT STUB OUT (UNDERGROUND)



**PLUMBING SCOPE OF WORK - WATER**

**KEC TO PROVIDE:**

- ALL FAUCETS, AS REFLECTED ON EQUIPMENT SCHEDULE.
- WATER CONNECTION FROM ICE MACHINE FILTER TO ICE MACHINE.

**PLUMBING CONTRACTOR TO PROVIDE:**

- INSTALLATION OF ALL FIXTURES PROVIDED BY KEC.
- FINAL WATER CONNECTIONS FOR ALL EQUIPMENT REQUIRED.
- CONNECTION FROM STUB OUT TO ANY WATER FILTER.
- 1/2" SHUT OFF VALVE FROM STUB OUT TO ALL WATER FILTERS REFLECTED ON THIS PLAN.
- NECESSARY BACK FLOW EQUIPMENT AT SODA EQUIPMENT, ICE MACHINE, OR ANY OTHER DIRECT WATER CONNECTION AS REQUIRED PER CODE.
- PRESSURE REGULATOR FOR PROPER INSTALLATION OF DISH MACHINE AS REQUIRED BY MANUFACTURER.

**VENDOR TRADES:**

- FINAL CONNECTION FROM FILTER TO PROVIDED EQUIPMENT.

**PLUMBING SCOPE OF WORK - DRAINS**

**KEC TO PROVIDE:**

- ALL TWIST WASTE VALVES & BASKET DRAINS, AS REFLECTED ON EQUIPMENT SCHEDULE.
- INSTALLATION OF PVC DRAINS FOR ICE MACHINE AND ICE BIN WITH NECESSARY AIR VENT AS PER CODE.
- PIPE CONDENSATE DRAIN FOR WALK IN COOLER WITH 3/4" COPPER TUBING, WITH NECESSARY "P" TRAPS AS PER CODE.
- PIPE CONDENSATE DRAIN FOR WALK IN FREEZER WITH 3/4" COPPER TUBING, WITH NECESSARY "P" TRAPS AS PER CODE. PROVIDE INSULATION AND HEAT TAPE IN ALL FREEZER AREAS.

**PLUMBING CONTRACTOR TO PROVIDE:**

- RIGID DRAIN LINES FOR ALL DIRECT & INDIRECT WASTE. COPPER REQUIRED FOR HOT WATER DRAIN APPLICATIONS/PVC FOR COLD. SEE PLUMBING SCHEDULE NOTES.
- MINIMUM 1 1/2" AIR GAP ABOVE FLOOR SINK FOR ALL INDIRECT WASTE PER CODE.
- ANCHOR ALL INDIRECT PIPING MINIMUM 6" ABOVE FLOOR WITH UNI-STRUT AND STRAPS FOR CLEAN FINISH.

"FOR REFERENCE ONLY"

THIS DRAWING IS AN INSTRUMENT OF DESIGN SERVICE AND IS THE INTELLECTUAL PROPERTY OF AZ RESTAURANT CONSULTING. THIS PROPERTY MAY NOT BE REALLOCATED IN ANY FORM, BY ANY OTHER ENTITY, FOR ANY PURPOSE WITHOUT WRITTEN PERMISSION FROM AZ RESTAURANT CONSULTING, UNDER PENALTY OF LAW. THIS DRAWING IS THE CULMINATION OF CONTRACTED TIME BETWEEN OUR EXPERIENCED DESIGN CONSULTANT AND THE "OWNER"/"OWNER'S REPRESENTATIVE" WHICH REFLECTS THE JOINT OPINION OF BOTH PARTIES. THE LAYOUT(S) ABOVE ARE INTENDED TO PRESENT THE MOST EFFICIENT AND EFFECTIVE USE OF THE SPACE PROVIDED, ACCORDING TO INFORMATION UNDERSTOOD BY ALL PARTIES AT THE ORIGINAL DATE OR MOST RECENT REVISION DATE SHOWN ON THIS DRAWING. DEVIATION FROM THE DETAILS ABOVE ARE NOT THE RESPONSIBILITY OF AZ RESTAURANT CONSULTING.

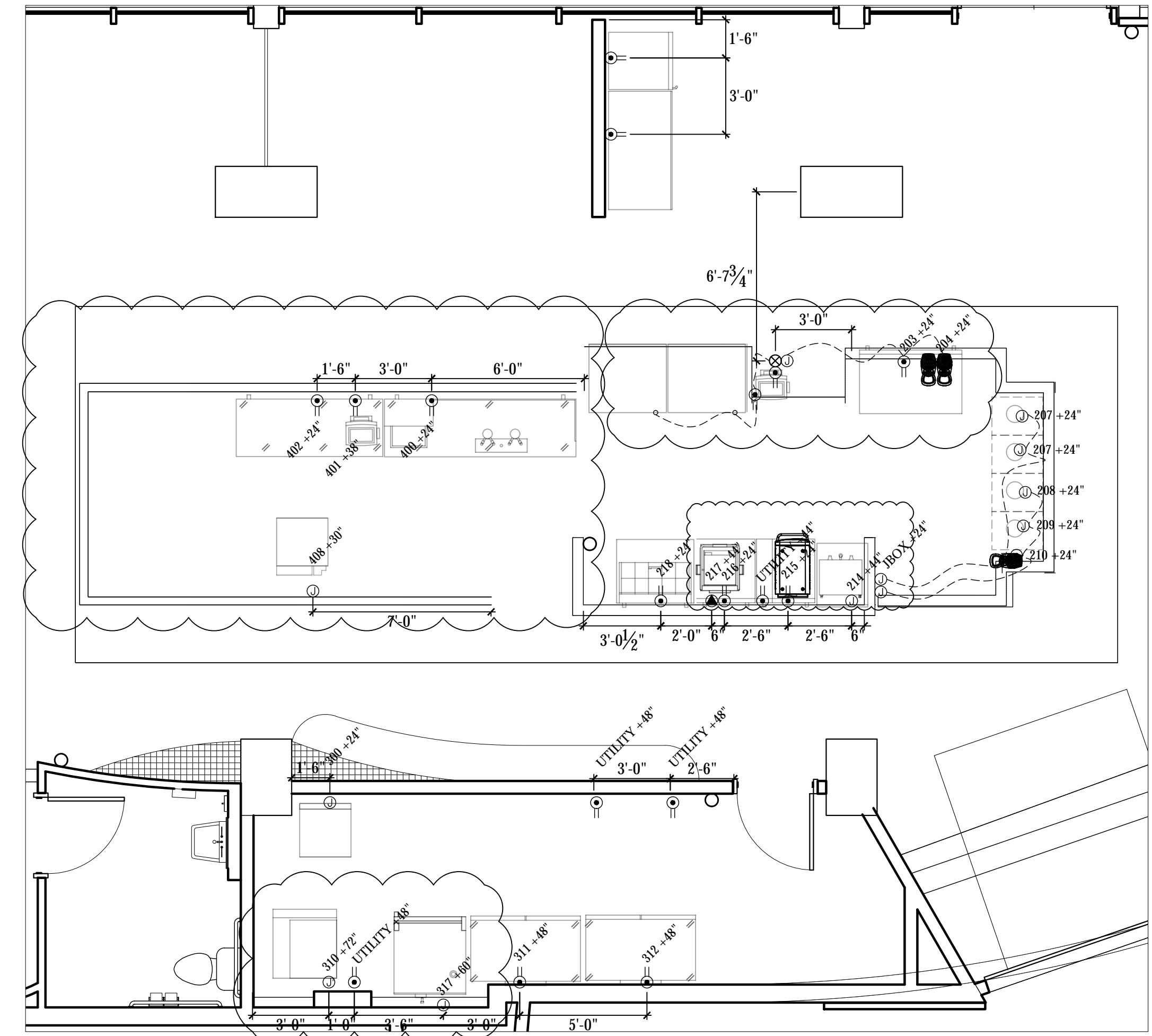
|      |         |                         |        |
|------|---------|-------------------------|--------|
| REV. | 4/7/23  | BAR ADDITION            | STATUS |
|      | 4/11/23 | BOH KITCHEN ADJUSTMENTS |        |
|      | 4/18/23 | NEW BACKGROUND          |        |
|      |         |                         |        |
|      |         |                         |        |

**ARCHITECT**  
**GRAY REESE, LLC ARCHITECTS**  
 244 13TH STREET NE #201  
 ATLANTA, GEORGIA 30309  
 (404) 234-6002

**AZ ARC**  
**ARIZONA**  
 RESTAURANT CONSULTING  
 7920 E. OAK STREET - SCOTTSDALE, ARIZONA 85257  
 602.699.5131  
 JUSTIN@AZRESTAURANTCONSULTING.COM

Drawn by: **JBM**  
 Checked by:  
 Date: **3/18/2023**  
 Sheet Number:

**FS-2.0**



ELECTRICAL ROUGH IN PLAN  
SCALE: 1/4"=1'-0"

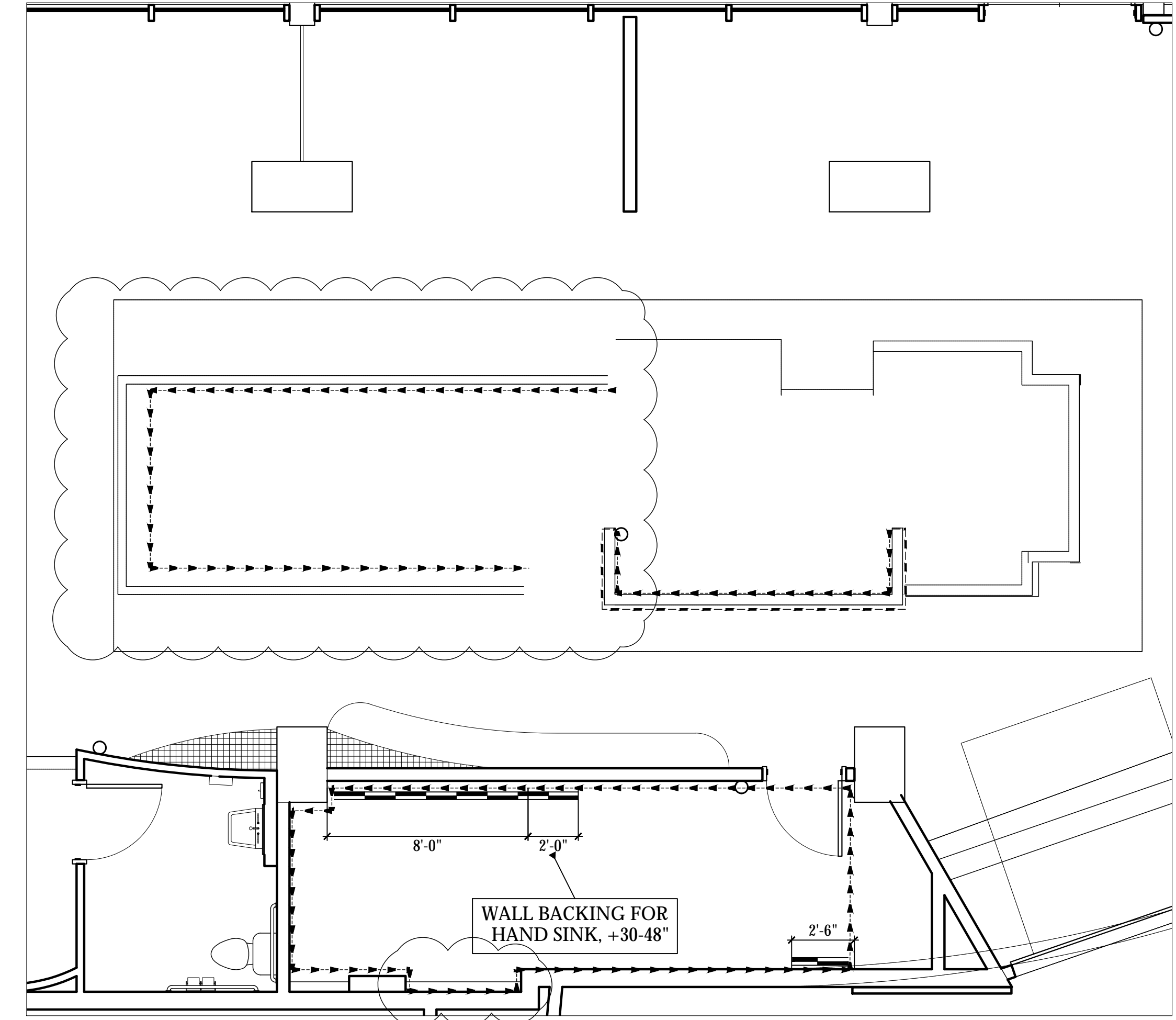
- LEGEND - ELECTRICAL CONNECTIONS**  
NOT ALL SYMBOLS MAY BE USED
- ⊖ DUPLICATION SYMBOL, 15-AMP, 120-VOLT, GROUND TYPE, VERTICAL MOUNT
  - ⊕ DUPLICATION SYMBOL, 20-AMP, 120-VOLT, GROUND TYPE, VERTICAL MOUNT
  - ⊖ DUPLICATION SYMBOL W/ GFI, 20-AMP, 120-VOLT, GROUND TYPE, VERTICAL MOUNT
  - ⊕ SIMPLEX RECEIPT, 20-AMP, 120-VOLT, GROUND TYPE, VERTICAL MOUNT
  - ⊖ SPECIAL PURPOSE OUTLET, 208/240-VOLT NEMA CONFIG. AS INDICATED, ON EQUIP. SCHEDULE AS INDICATED, GROUND TYPE, VERTICAL MOUNT
  - ⊕ JUNCTION BOX FOR DIRECT CONNECTION
  - ⊗ STUB OUT FOR UNDERGROUND CONDUIT
  - ⊕ FIELD WIRING, EXPOSED RIGID WATERTIGHT CONDUIT
  - ⊕ REMOTE CONDENSER ELECTRICAL CONNECTION OUTGOING FROM KITCHEN TO ROOFTOP
  - ⊕ MANUAL DISCONNECT SWITCH, WATERTIGHT

- ELECTRICAL SCOPE OF WORK**
- ELECTRICAL CONTRACTOR NOTES:**
- 1) ALL DIMENSIONS ARE TO CENTER OF OUTLET BOX.
  - 2) RUN CONDENSER POWER FROM BACK OF ICE MACHINE TO ROOFTOP WITH REFRIGERATION LINES.
  - 3) MOUNT WATERPROOF JBOX TO ICE MACHINE CONDENSER - PROVIDE SHUT OFF SWITCH WITHIN 6 FEET PER CODE - INCOMING POWER FROM ICE MACHINE TO ROOFTOP LOCATION.
  - 4) PROVIDE DIRECT SHUNT TRIP BREAKER FOR WALK IN FREEZER DOOR HEAT STRIP (BY KEC/WALK IN MANUFACTURER) AND DRAIN LINE HEATER (BY KEC) - WIRE TIME CLOCK IF SHIPPED LOOSE.
  - 5) PROVIDE DISCONNECT SWITCH FOR EACH WALK IN CONDENSER WITHIN 6 FEET PER CODE.
  - 6) WIRE EXHAUST FANS, MAKE UP AIR UNITS AND ALL DESIGNATED OUTLETS UNDER HOOD SYSTEMS INTO ELECTRICAL CONTROL PANEL (KEC PROVIDED).
- GENERAL NOTES:**
- PROVIDE GFI OUTLETS IN ALL AREAS OF THE KITCHEN.
  - DIRECT CONNECTIONS REQUIRED ARE TO BE WATERTIGHT CONDUIT

|                 |   |   |                         |        |
|-----------------|---|---|-------------------------|--------|
| REV.            | △ | 4/7/23  | BAR ADDITION            | STATUS |
|                 | △ | 4/11/23   | BOH KITCHEN ADJUSTMENTS |        |
|                 | △ | 4/18/23   | NEW BACKGROUND          |        |
|                 | △ | -   | -                       |        |
| ARCHITECT       |   | GRAY REESE, LLC ARCHITECTS<br>244 13TH STREET NE #201<br>ATLANTA, GEORGIA 30309<br>(404) 234-6002 |                         |        |
|                 |   | LAND OF A THOUSAND HILLS<br>BIRMINGHAM, ALABAMA<br>ELECTRICAL ROUGH IN PLAN                       |                         |        |
| Drawn by: JBM   |   | Checked by:   |                         |        |
| Date: 3/18/2023 |   | Sheet Number:   |                         |        |
| FS-3.0          |   |   |                         |        |

THIS DRAWING IS AN INSTRUMENT OF DESIGN SERVICE AND IS THE INTELLECTUAL PROPERTY OF AZ RESTAURANT CONSULTING. THIS PROPERTY MAY NOT BE REALLOCATED IN ANY FORM, BY ANY OTHER ENTITY, FOR ANY PURPOSE WITHOUT WRITTEN PERMISSION FROM AZ RESTAURANT CONSULTING, UNDER PENALTY OF LAW. THIS DRAWING IS THE CULMINATION OF CONTRACTED TIME BETWEEN OUR EXPERIENCED DESIGN CONSULTANT AND THE "OWNER"/"OWNER'S REPRESENTATIVE" WHICH REFLECTS THE JOINT OPINION OF BOTH PARTIES. THE LAYOUT(S) ABOVE ARE INTENDED TO PRESENT THE MOST EFFICIENT AND EFFECTIVE USE OF THE SPACE PROVIDED, ACCORDING TO INFORMATION UNDERSTOOD BY ALL PARTIES AT THE ORIGINAL DATE OR MOST RECENT REVISION DATE SHOWN ON THIS DRAWING. DEVIATION FROM THE DETAILS ABOVE ARE NOT THE RESPONSIBILITY OF AZ RESTAURANT CONSULTING.

FOR REFERENCE ONLY



SPECIAL CONDITIONS PLAN  
SCALE: 1/4"=1'-0"

**WALL FINISH DETAILS IN FOODSERVICE AREAS**  
NOT ALL SYMBOLS MAY BE USED

≡ S/S WALL FLASHING, 20 GAUGE W/  
JOINING STRIPS @ SEAMS, MOUNT  
FROM 6" TO 8'-6" AFF. w/ 6" COVED BASE

⋯ FRP. WHITE W/ JOINING STRIPS @ SEAMS, MOUNT  
FROM TOP OF COVED BASE TO CEILING GRID  
UNLESS OTHERWISE NOTED ON PLAN.

⋯ EPOXY PAINT, NSF APPROVED OVER BLOCK  
CONSTRUCTION AS APPROVED BY HEALTH  
DEPARTMENT.

**WALL BACKING DETAILS IN FOODSERVICE AREAS**  
NOT ALL SYMBOLS MAY BE USED

▬ 5/8" PLYWOOD WALL BACKING, IN LIEU OF  
SHEETROCK FROM 4'-0" TO 8'-0" UNLESS  
OTHERWISE NOTED ON PLAN

⊘ NON-COMBUSTIBLE WALL BACKING, TBD BY GC, BEHIND  
SHEETROCK FROM 4'-0" TO 8'-0" UNLESS OTHERWISE  
NOTED ON PLAN

| REV. | DATE    | DESCRIPTION             | STATUS |
|------|---------|-------------------------|--------|
| △    | 4/7/23  | BAR ADDITION            |        |
| △    | 4/11/23 | BOH KITCHEN ADJUSTMENTS |        |
| △    | 4/18/23 | NEW BACKGROUND          |        |
| △    | -       | -                       | -      |
| △    | -       | -                       | -      |

**ARCHITECT**  
GRAY REESE, LLC ARCHITECTS  
244 13TH STREET NE #201  
ATLANTA, GEORGIA 30309  
(404) 234-6002

**AZ\*RC**  
**ARIZONA**  
RESTAURANT CONSULTING  
7920 E. OAK STREET - SCOTTSDALE, ARIZONA 85257  
602.699.5131  
JUSTIN@AZRESTAURANTCONSULTING.COM

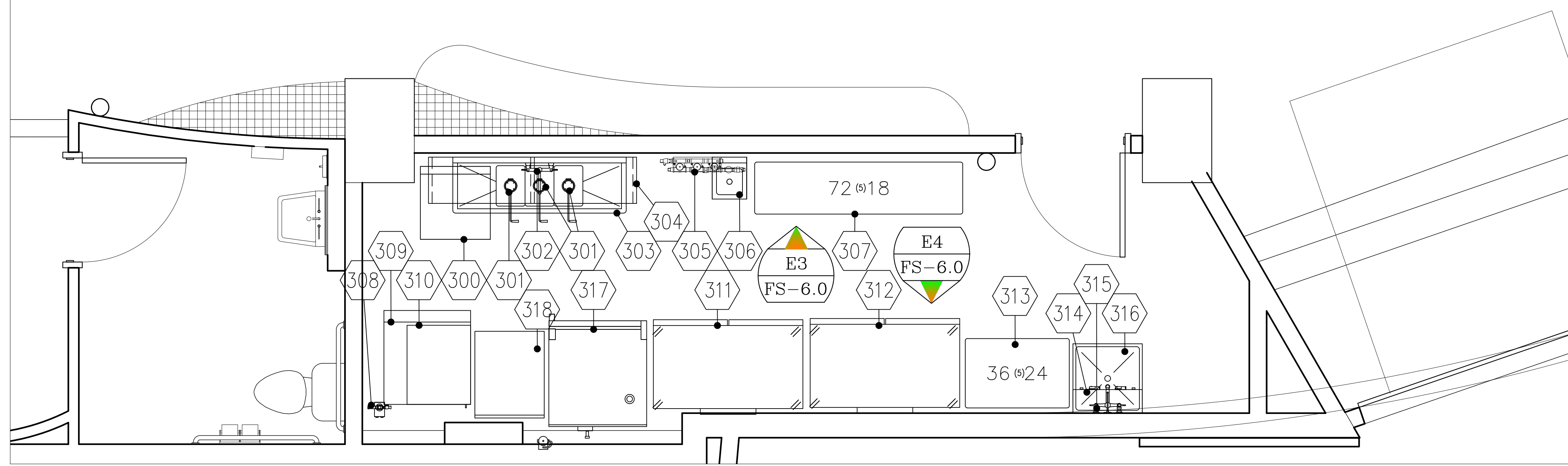
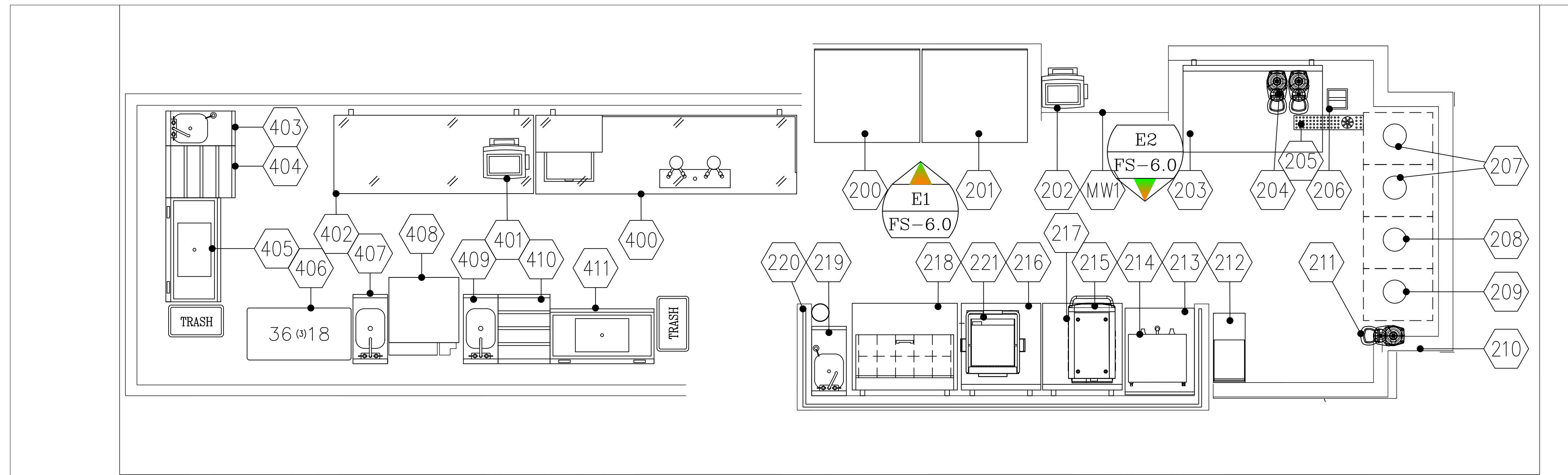
LAND OF A THOUSAND HILLS  
BIRMINGHAM, ALABAMA  
SPECIAL CONDITIONS PLAN

Drawn by: JBM  
Checked by:  
Date: 3/18/2023  
Sheet Number:

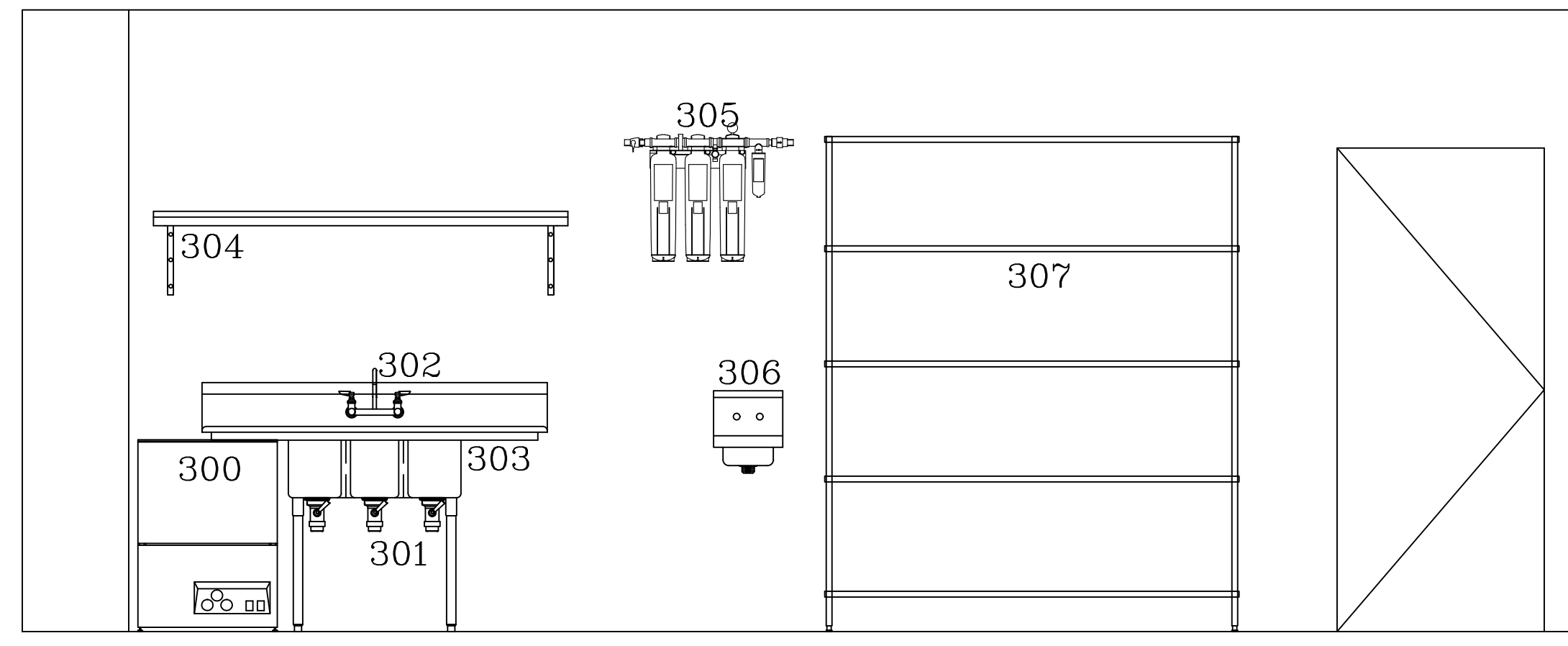
FS-4.0

"FOR REFERENCE ONLY"

THIS DRAWING IS AN INSTRUMENT OF DESIGN SERVICE AND IS THE INTELLECTUAL PROPERTY OF AZ RESTAURANT CONSULTING. THIS PROPERTY MAY NOT BE REALLOCATED IN ANY FORM, BY ANY OTHER ENTITY, FOR ANY PURPOSE WITHOUT WRITTEN PERMISSION FROM AZ RESTAURANT CONSULTING, UNDER PENALTY OF LAW. THIS DRAWING IS THE CULMINATION OF CONTRACTED TIME BETWEEN OUR EXPERIENCED DESIGN CONSULTANT AND THE "OWNER"/"OWNER'S REPRESENTATIVE" WHICH REFLECTS THE JOINT OPINION OF BOTH PARTIES. THE LAYOUT(S) ABOVE ARE INTENDED TO PRESENT THE MOST EFFICIENT AND EFFECTIVE USE OF THE SPACE PROVIDED, ACCORDING TO INFORMATION UNDERSTOOD BY ALL PARTIES AT THE ORIGINAL DATE OR MOST RECENT REVISION DATE SHOWN ON THIS DRAWING. DEVIATION FROM THE DETAILS ABOVE ARE NOT THE RESPONSIBILITY OF AZ RESTAURANT CONSULTING.

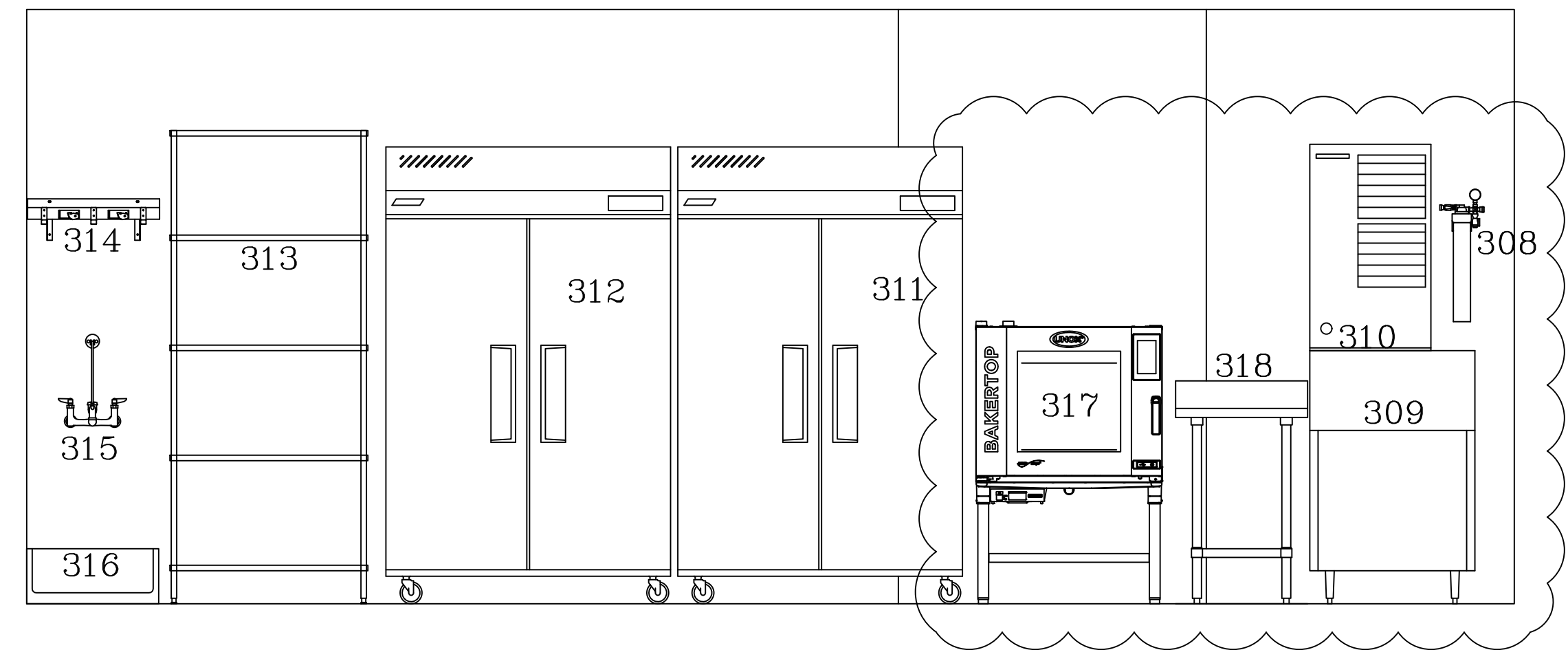


1ST FLOOR EQUIPMENT FLOOR PLAN  
SCALE: 1/2"=1'-0"



E3 BACK OF HOUSE - NORTH

SCALE: 1/2"=1'-0"



E4 BACK OF HOUSE - SOUTH

SCALE: 1/2"=1'-0"

| REV. | DATE    | DESCRIPTION             | STATUS |
|------|---------|-------------------------|--------|
| 1    | 4/7/23  | BAR ADDITION            |        |
| 2    | 4/11/23 | BOH KITCHEN ADJUSTMENTS |        |
| 3    | 4/18/23 | NEW BACKGROUND          |        |
| 4    | -       | -                       |        |
| 5    | -       | -                       |        |

**ARCHITECT**  
**GRAY REESE, LLC ARCHITECTS**  
 244 13TH STREET NE #201  
 ATLANTA, GEORGIA 30309  
 (404) 234-6002

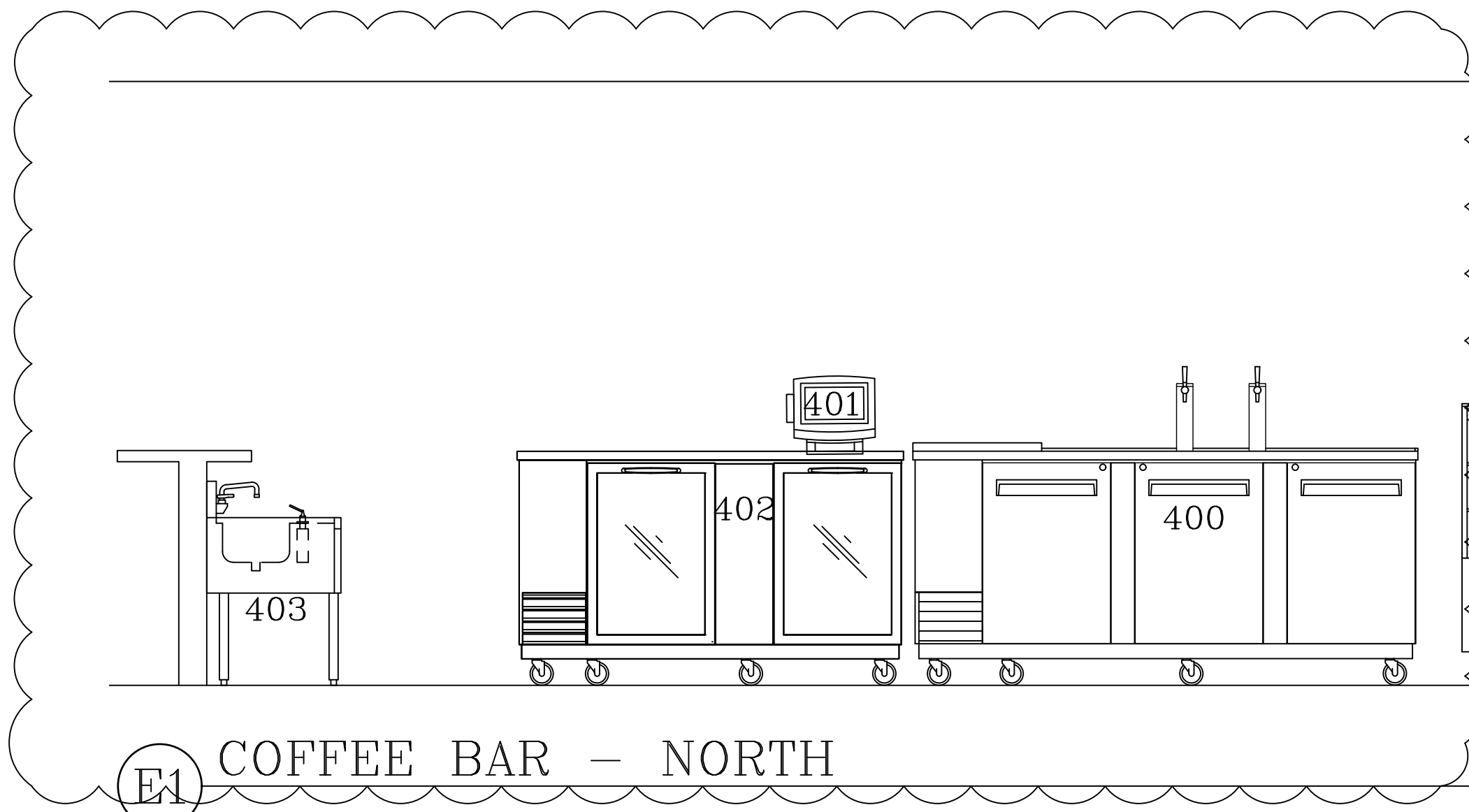
**AZ ARC**  
**ARIZONA**  
 RESTAURANT CONSULTING  
 7920 E. OAK STREET - SCOTTSDALE, ARIZONA 85257  
 JUSTIN@AZRESTAURANTCONSULTING.COM

Drawn by: **JBM**  
 Checked by:  
 Date: **3/18/2023**  
 Sheet Number:

**FS-5.0**

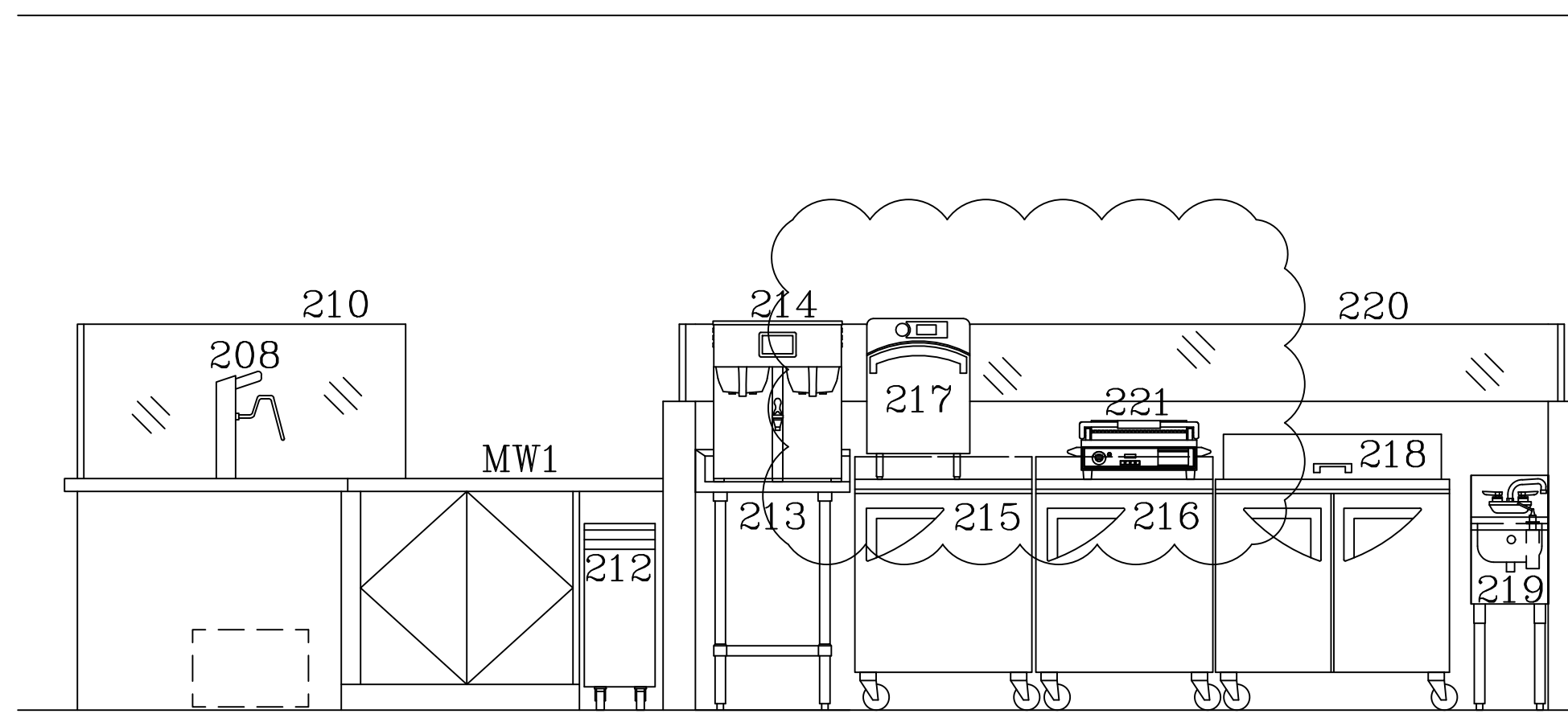
THIS DRAWING IS AN INSTRUMENT OF DESIGN SERVICE AND IS THE INTELLECTUAL PROPERTY OF AZ RESTAURANT CONSULTING. THIS PROPERTY MAY NOT BE REALLOCATED IN ANY FORM, BY ANY OTHER ENTITY, FOR ANY PURPOSE WITHOUT WRITTEN PERMISSION FROM AZ RESTAURANT CONSULTING, UNDER PENALTY OF LAW. THIS DRAWING IS THE CULMINATION OF CONTRACTED TIME BETWEEN OUR EXPERIENCED DESIGN CONSULTANT AND THE "OWNER"/"OWNER'S REPRESENTATIVE" WHICH REFLECTS THE JOINT OPINION OF BOTH PARTIES. THE LAYOUT(S) ABOVE ARE INTENDED TO PRESENT THE MOST EFFICIENT AND EFFECTIVE USE OF THE SPACE PROVIDED, ACCORDING TO INFORMATION UNDERSTOOD BY ALL PARTIES AT THE ORIGINAL DATE OR MOST RECENT REVISION DATE SHOWN ON THIS DRAWING. DEVIATION FROM THE DETAILS ABOVE ARE NOT THE RESPONSIBILITY OF AZ RESTAURANT CONSULTING.

FOR REFERENCE ONLY



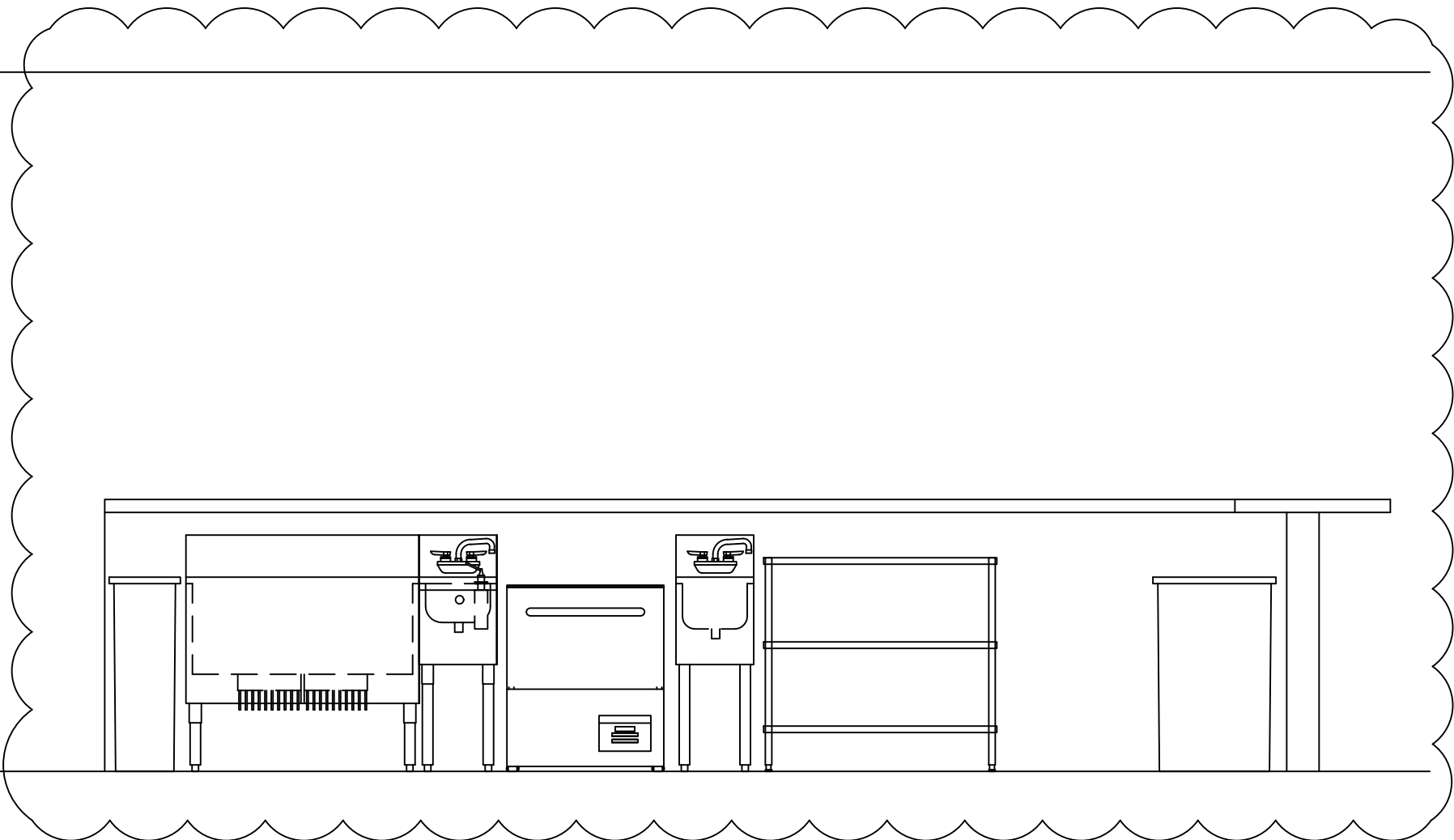
E1 COFFEE BAR - NORTH

SCALE: 1/2"=1'-0"



E2 COFFEE BAR - SOUTH

SCALE: 1/2"=1'-0"



|                          |   |                         |                |   |                      |
|--------------------------|---|-------------------------|----------------|---|----------------------|
| REV.                     | 4/7/23  | 4/11/23                 | 4/18/23        | - | -                    |
|                          | BAR ADDITION  | BOH KITCHEN ADJUSTMENTS | NEW BACKGROUND | - | -                    |
| ARCHITECT                | GRAY REESE, LLC ARCHITECTS<br>244 13TH STREET NE #201<br>ATLANTA, GEORGIA 30309<br>(404) 234-6002   |                         |                |   |                      |
| STATUS                   |  ARIZONA RESTAURANT CONSULTING<br>7920 E. OAK STREET - SCOTTSDALE, ARIZONA 85257<br>JUSTIN@AZRESTAURANTCONSULTING.COM |                         |                |   |                      |
| LAND OF A THOUSAND HILLS | BIRMINGHAM, ALABAMA   |                         |                |   | EQUIPMENT ELEVATIONS |
| Drawn by:                | JBM   |                         |                |   |                      |
| Checked by:              |   |                         |                |   |                      |
| Date:                    | 3/18/2023   |                         |                |   |                      |
| Sheet Number:            | FS-5.1  |                         |                |   |                      |

THIS DRAWING IS AN INSTRUMENT OF DESIGN SERVICE AND IS THE INTELLECTUAL PROPERTY OF AZ RESTAURANT CONSULTING. THIS PROPERTY MAY NOT BE REALLOCATED IN ANY FORM, BY ANY OTHER ENTITY, FOR ANY PURPOSE WITHOUT WRITTEN PERMISSION FROM AZ RESTAURANT CONSULTING, UNDER PENALTY OF LAW. THIS DRAWING IS THE CULMINATION OF CONTRACTED TIME BETWEEN OUR EXPERIENCED DESIGN CONSULTANT AND THE "OWNER"/"OWNER'S REPRESENTATIVE" WHICH REFLECTS THE JOINT OPINION OF BOTH PARTIES. THE LAYOUT(S) ABOVE ARE INTENDED TO PRESENT THE MOST EFFICIENT AND EFFECTIVE USE OF THE SPACE PROVIDED, ACCORDING TO INFORMATION UNDERSTOOD BY ALL PARTIES AT THE ORIGINAL DATE OR MOST RECENT REVISION DATE SHOWN ON THIS DRAWING. DEVIATION FROM THE DETAILS ABOVE ARE NOT THE RESPONSIBILITY OF AZ RESTAURANT CONSULTING.

FOR REFERENCE ONLY